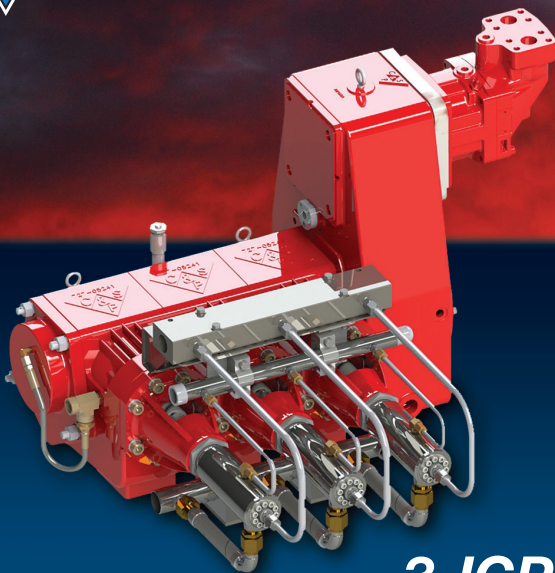




CS&P Technologies



FLUIDS PUMPED

- ▼ Nitrogen
- ▼ Oxygen
- ▼ Argon
- ▼ Methane (LNG)
- ▼ Ethylene
- ▼ CO₂

3-ICP-200 Reciprocating Pump

CS&P's reciprocating pumps are designed and manufactured to exceed the highest standards for performance and quality. Cold ends are specifically designed to deliver cryogenic liquids at high pressure and can be adapted for non-cryogenic applications as well. Our equipment is suited for use in a variety of applications including well service, industrial gas, alternative fueling, food and beverage processing, medical and aerospace.

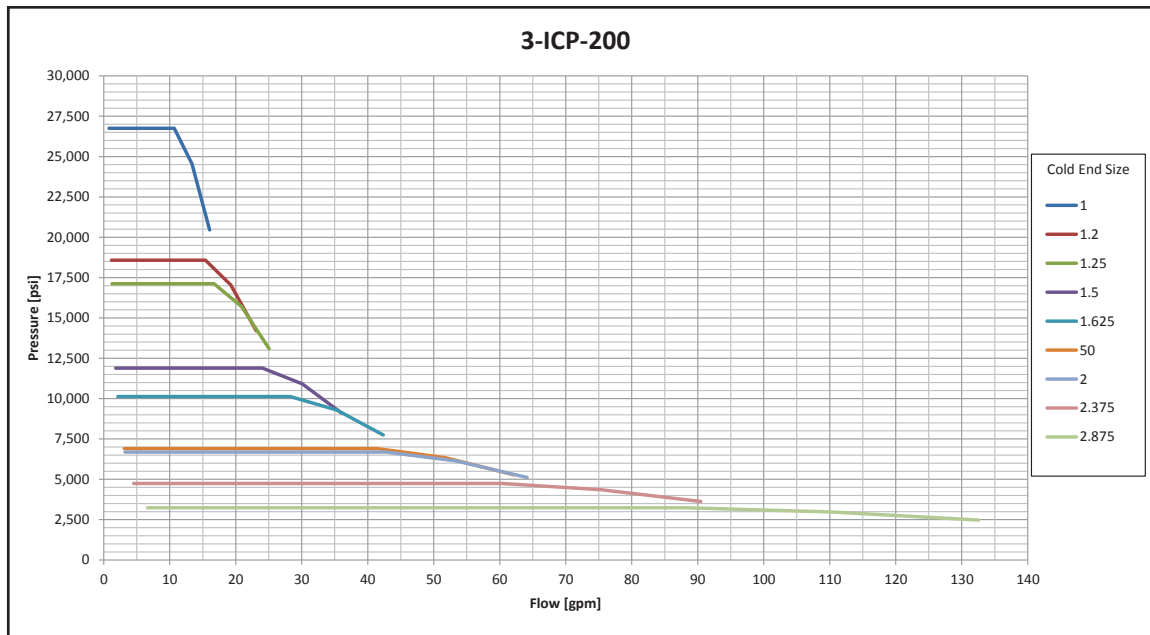
APPLICATIONS

- ▼ Coil Tubing Support
- ▼ Well Service
- ▼ High Pressure Pumping
- ▼ Purging
- ▼ Fracturing

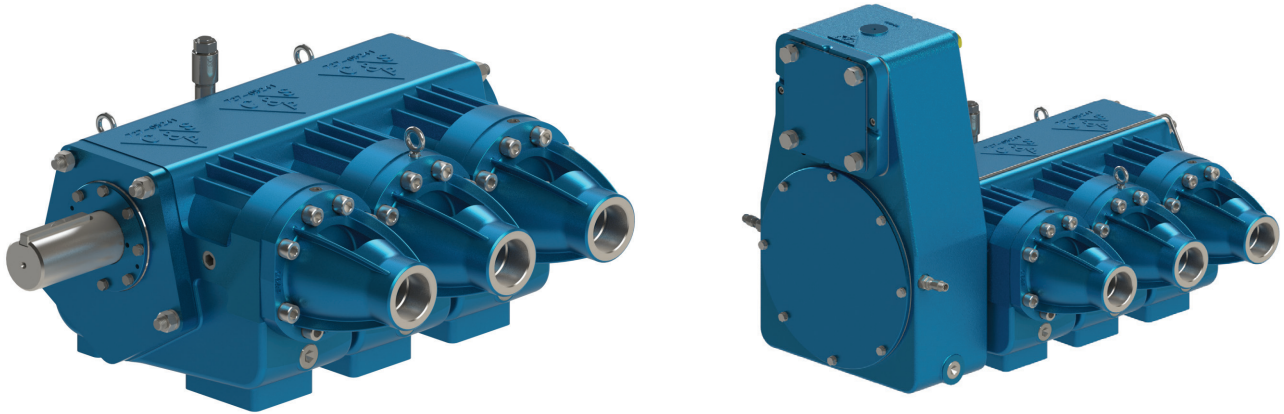
PUMP PERFORMANCE

- ▼ Maximum HP:
240 hp
- ▼ Maximum Rod Load:
21,000 lbs
- ▼ Maximum RPM:
1,200 rpm
- ▼ Minimum RPM:
60 rpm
- ▼ Maximum Suction Pressure:
300 psi
- ▼ Pressure Lubrication
- ▼ Gear Reduction Models:
3.04:1 Ratio
- ▼ Oxygen Cleaning Available

18119 Telge Road ▼ Cypress, Texas 77429
Office (713) 467-0869 ▼ Fax (713) 464-2089
www.csphouston.com



3-ICP-200GR



CS&P Technologies

CS&P Technologies
 18119 Telge Road
 Cypress, Texas 77429
 Office (713) 467-0869
 Fax (713) 464-2089

CS&P Technologies Canada
 109 Clearsky Way
 Red Deer, AB T4E 0A1
 Office (403) 346-8240
 Fax (403) 346-8245

CS&P Criogenica de Mexico, S.A. de C. V.
 Carretera Villahermosa-Cardenas KM 5.5
 Parque Logistico Industrial Tabasco
 Villahermosa Tabasco C.P. 86103
 Office + 52 993-142-7031

(800) 262-6103 ▼ www.csphouston.com