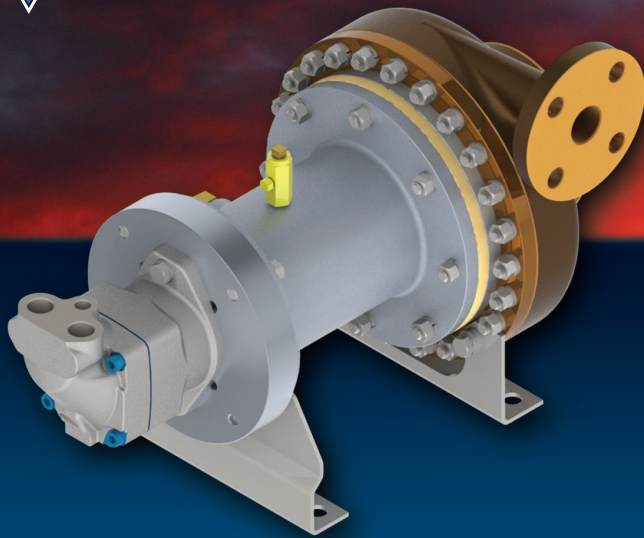




CS&P Technologies



FLUIDS PUMPED

- ▼ Nitrogen
- ▼ Argon
- ▼ Methane (LNG)
- ▼ Ethylene

1.5" X 2.5" X 10" Magnetic Drive Centrifugal Pump

CS&P offers a full line of premium quality centrifugal pumps. Our pumps are available in aluminum and bronze construction. The magnetic drive pump provides our revolutionary "sealless" design for a lifetime of leak-free operation. All of our pumps are specially fitted with an inducer for low NPSH requirements.

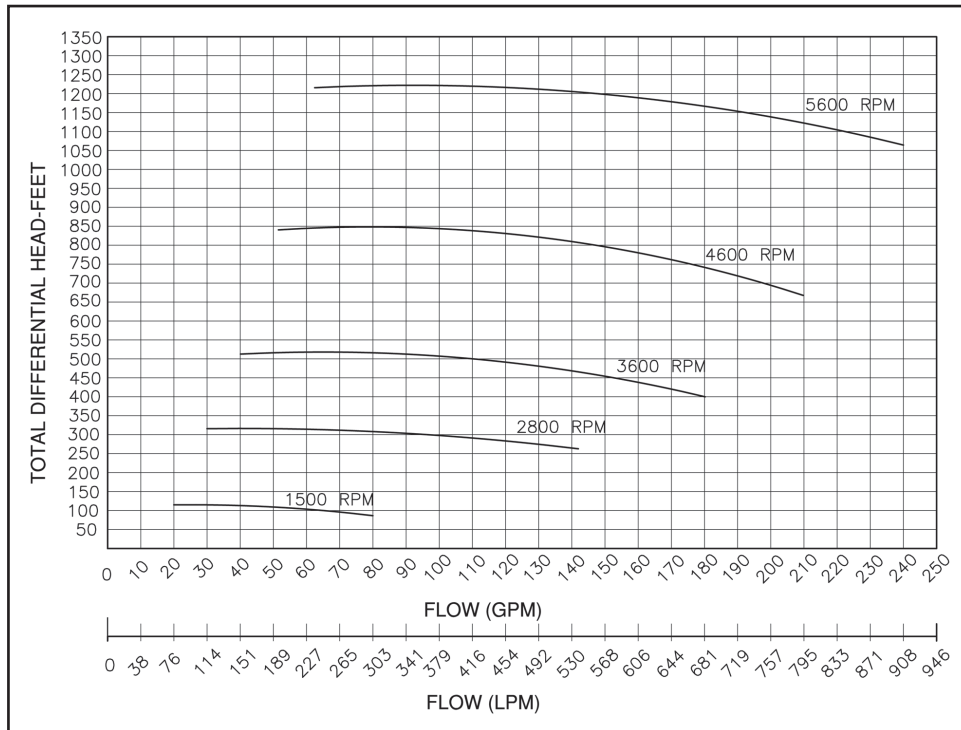
FEATURES & BENEFITS

- ▼ Zero-leak magnetic drive pump technology
- ▼ High efficiency impeller design
- ▼ Rugged shaft & bearing design for longer service life

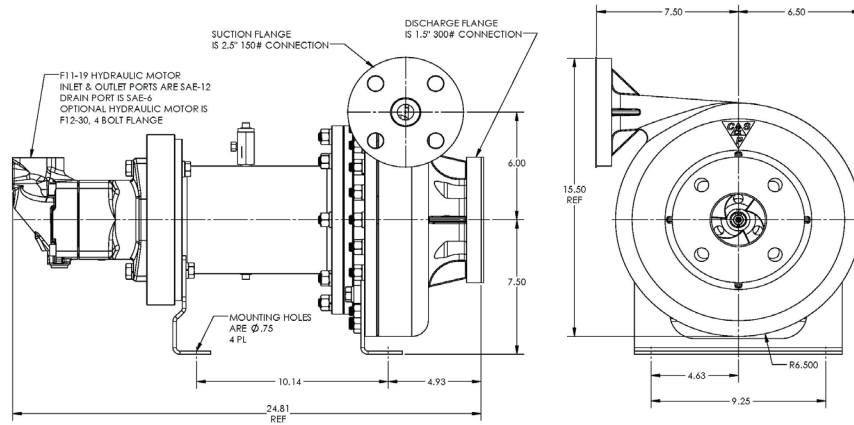
OPERATIONAL LIMITS

- ▼ Flow Range:
20 - 235 gpm (76 - 890 lpm)
- ▼ Max Differential Head:
1,240 ft. (377.95 m.)
- ▼ Power Rating:
26 - 96 hp (19.4-71.6 kW)
- ▼ NPSHr:
3 - 10 ft. (0.9 - 3 m)
- ▼ Speed Range:
1,500 - 5,600 rpm
- ▼ Max Suction Pressure:
300 psi (20.7 bar)

18119 Telge Road ▼ Cypress, Texas 77429
Office (713) 467-0869 ▼ Fax (713) 464-2089
www.csphouston.com



DIMENSIONAL INFORMATION



CS&P Technologies
 18119 Telge Road
 Cypress, Texas 77429
 Office (713) 467-0869
 Fax (713) 464-2089

CS&P Technologies Canada
 109 Clearskye Way
 Red Deer, AB T4E 0A1
 Office (403) 346-8240
 Fax (403) 346-8245

CS&P Criogenica de Mexico, S.A. de C. V.
 Carretera Villahermosa-Cardenas KM 5.5
 Parque Logistico Industrial Tabasco
 Villahermosa Tabasco C.P. 86103
 Office + 52 993-142-7031

(800) 262-6103 ▼ www.csphouston.com