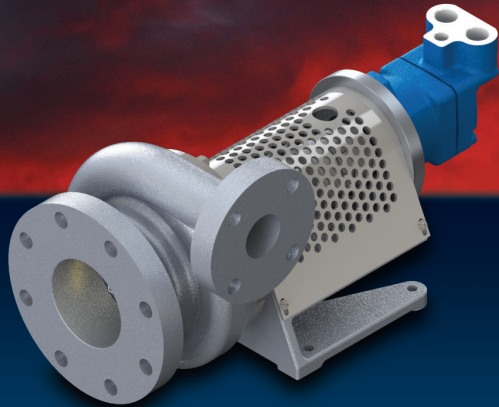




CS&P Technologies



FLUIDS PUMPED

- ▼ Nitrogen
- ▼ Oxygen
- ▼ Methane (LNG)
- ▼ Argon
- ▼ Ethylene

2" X 3" X 6" and 2" X 4" X 6" Conventional Centrifugal Pump

CS&P offers a full line of premium quality centrifugal pumps. Our pumps are available in aluminum and bronze construction for compatibility with oxygen. All of our pumps can be specially fitted with an inducer for low NPSH requirements.

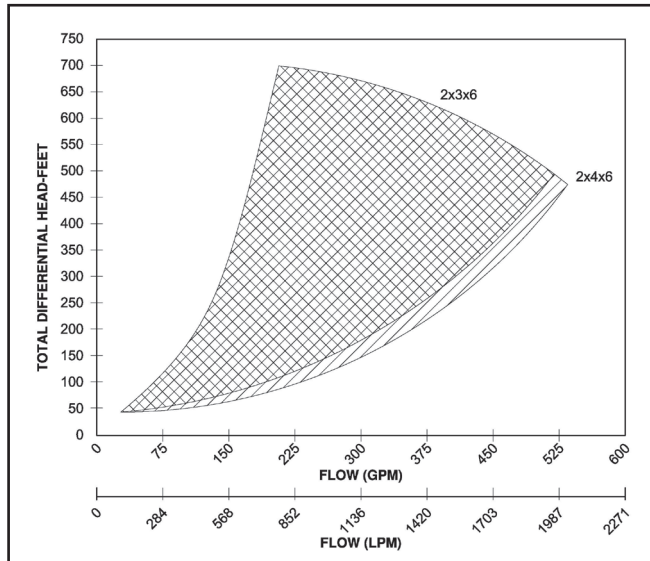
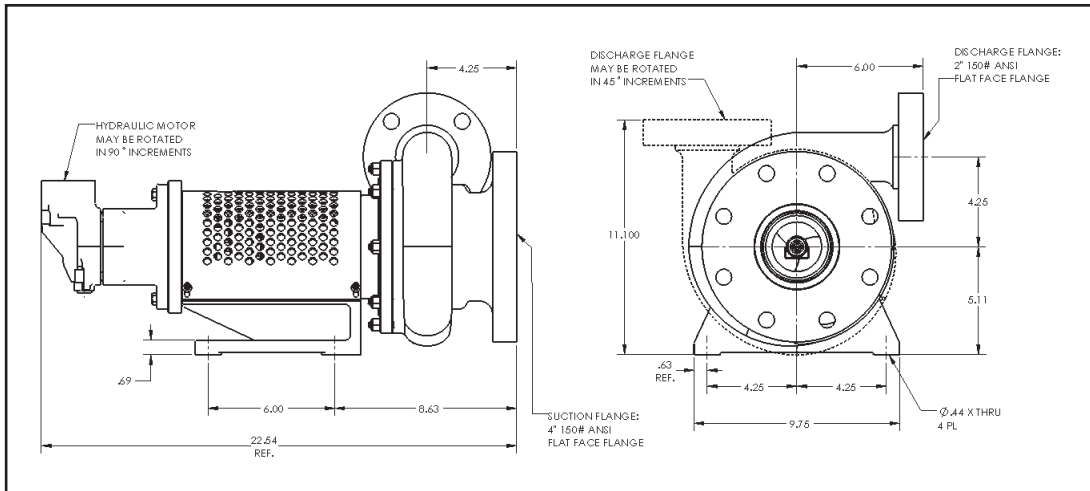
APPLICATIONS

- ▼ Extended life, high performance mechanical seal
- ▼ High efficiency impeller design
- ▼ Stainless steel bearing housing designed for heavy-duty jobs
- ▼ Rugged shaft & bearing design for longer service life

PUMP PERFORMANCE

- ▼ Flow Range: 25 - 360 gpm (95 - 1362 lpm)
- ▼ Max Differential Head: 650 ft (198 m)
- ▼ Power Rating: 65 hp max (48 kW max)
- ▼ NPSHr: 5 - 35 ft (1.5 - 10.5 m)
- ▼ Speed Range: 8100 rpm max
- ▼ Max Suction Pressure: 120 -215 psi (8 - 14.8 bar)

18119 Telge Road ▼ Cypress, Texas 77429
Office (713) 467-0869 ▼ Fax (713) 464-2089
www.csphouston.com



CS&P Technologies

CS&P Technologies
 18119 Telge Road
 Cypress, Texas 77429
 Office (713) 467-0869
 Fax (713) 464-2089

CS&P Technologies Canada
 109 Clearskye Way
 Red Deer, AB T4E 0A1
 Office (403) 346-8240
 Fax (403) 346-8245

CS&P Criogenica de Mexico, S.A. de C. V.
 Carretera Villahermosa-Cardenas KM 5.5
 Parque Logistico Industrial Tabasco
 Villahermosa Tabasco C.P. 86103
 Office + 52 993-142-7031

(800) 262-6103 ▼ www.csphouston.com